

STEELE SOLUTIONS

SPACE UTILIZATION EXPERTS

-2026-



www.steelesolutions.com
info@steelesolutions.com



TABLE OF CONTENTS

ABOUT US	4
PLATFORMS	8
PLATFORM ACCESSORIES	16
CHUTES	24
MATERIAL HANDLING	32
AUTOMATION	34
LOCKERS	38
SERVICE	46
CAPABILITIES	50

Solutions is more than just part of our name. We can provide our customers with a solution that helps them achieve success. That is very rewarding. When you do that over and over again you truly do form partnerships. — Kevin O’Neill, CEO



40+ YEARS OF INDUSTRY EXPERTISE

Companies work with Steele Solutions because they know they'll get a superior product and outstanding service from a company they can trust. From initial discussions all the way through installation, you can count on the professionals at Steele Solutions to walk you through every decision. We work tirelessly to understand each of our client's needs so we can provide creative solutions.



With a team of **60+ engineers**, we pride ourselves on product solutions with ingenuity and custom capabilities.



Our **solution-focused designs** keep products and people moving, minimizing congestion and obstacles and maximizing efficient flow from shelf to delivery truck.



Our products are **exclusively designed to streamline** product picking, packing, and sortation, helping our customers improve speed, efficiency, and accuracy.



100% of our steel products are **manufactured in the U.S.A.**



We deliver products **on budget** and **on time**, with a proprietary installation process that means you get the right parts at the right time.

PROUDLY CERTIFIED



GROWING STRONGER, TOGETHER



EST. 2023

Steele Solutions is a growth-focused company and the most trusted brand in the industry. We are focused on delivering innovation and excellence for our customers, our people, and our communities.



EST. 1903

Tiffin Metal Products lead the industry in the design and production of material handling chutes and public safety security lockers.

EST. 1986

MiTek was a leading mezzanine supplier bringing nearly four decades of expertise to the design, manufacturing and installation of mezzanine systems in North America.

EST. 1996

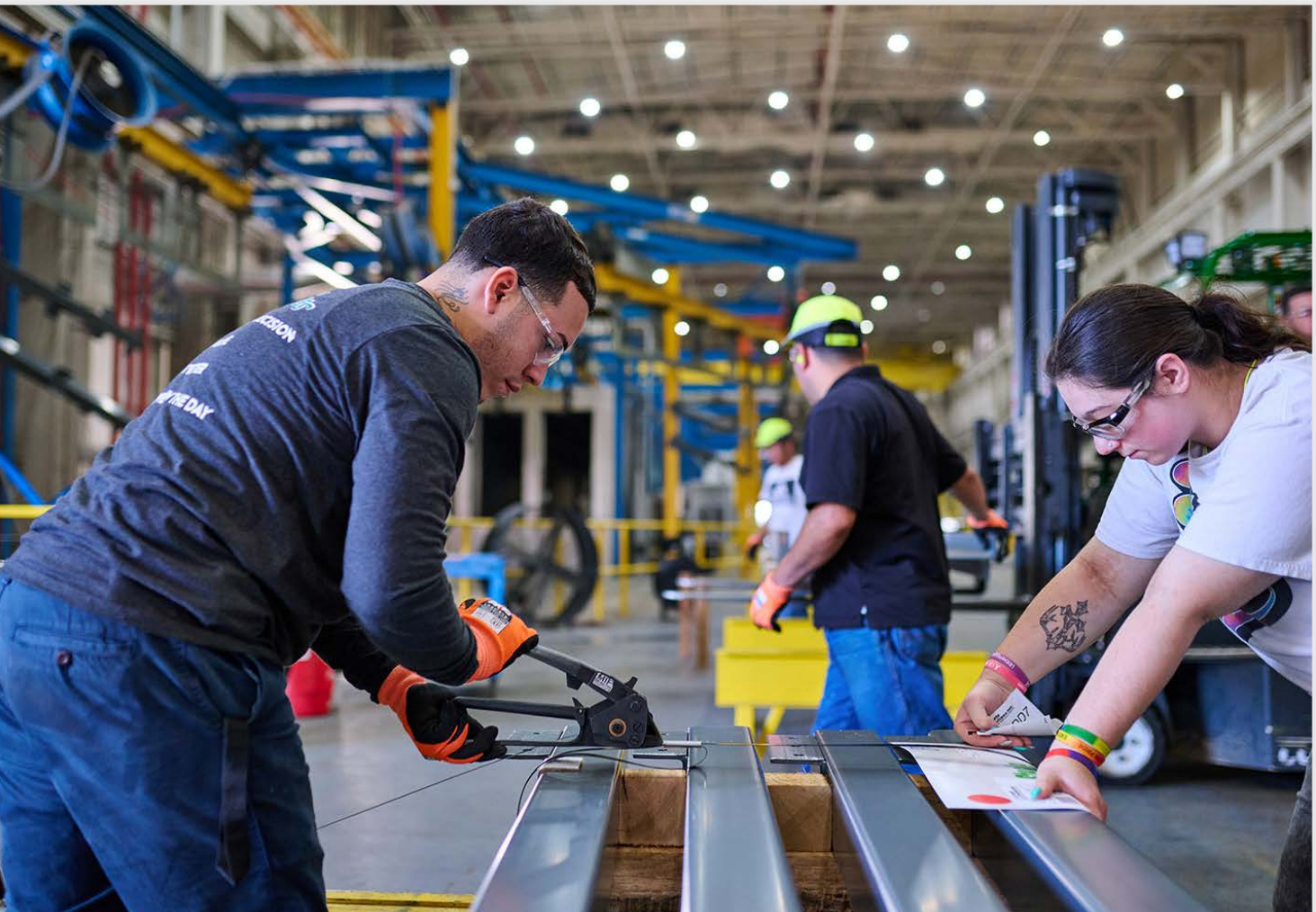
Steele Solutions, a premier manufacturer of steel work platforms, delivers safe, smart, and integrated solutions that align seamlessly with customers' needs.

We are dedicated to continuous improvement and growth, both individually and as a company. By embracing change, pursuing new opportunities, and striving to outdo yesterday, we ensure a brighter, stronger future.

WORK WITH US

Steele Solutions is a premier-level company recognized in our home city (Milwaukee, WI) as a “Best Place To Work.” We share this same strength with our customers and want you to have a great experience working with us.

Steele Solutions stands out because we do things differently. We drive innovation and safety with advanced manufacturing processes and creative, customized solutions. Our expertise means we can deliver simple, efficient designs with seamless project management to ensure on-time delivery. Guided by integrity, we earn your trust, making us your reliable partner for every project. We are Steele Solutions, the safe and smart choice.



OUR CORE VALUES: A FOCUS ON CULTURE AND COLLABORATION

At Steele Solutions, we are committed to providing innovative structural steel platform solutions that meet our customers' needs in the e-commerce online retail business. We'd love the opportunity to earn your business.

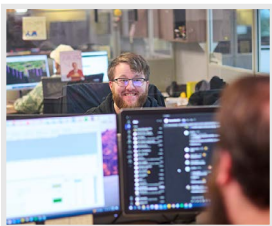
At Steele Solutions, our core values define how we work, make decisions, solve issues, and move the business forward.



Integrity in Every Decision: Doing what we say we will do is the core of every decision. Our customers rely on us to deliver quality products on time, and our team members expect to be treated with respect and honesty. Doing the right thing every day is how we run our business.



Grow or Die: We are driven to grow the right way. Growth is measured by taking care of the customer's needs, offering opportunities for team members to develop skills to advance in their careers, and making a difference in our community.



Make It Better: We empower our teams to think creatively, collaborate, and be part of the solution to making things better. We always strive for continuous improvement and never settle.



Together, We Win the Day: We work as a team to overcome the challenges of that day. This company was built with the idea that we can do it better. Our pride in the quality, teamwork, creative solutions, and tenacity allow us to win every single day.

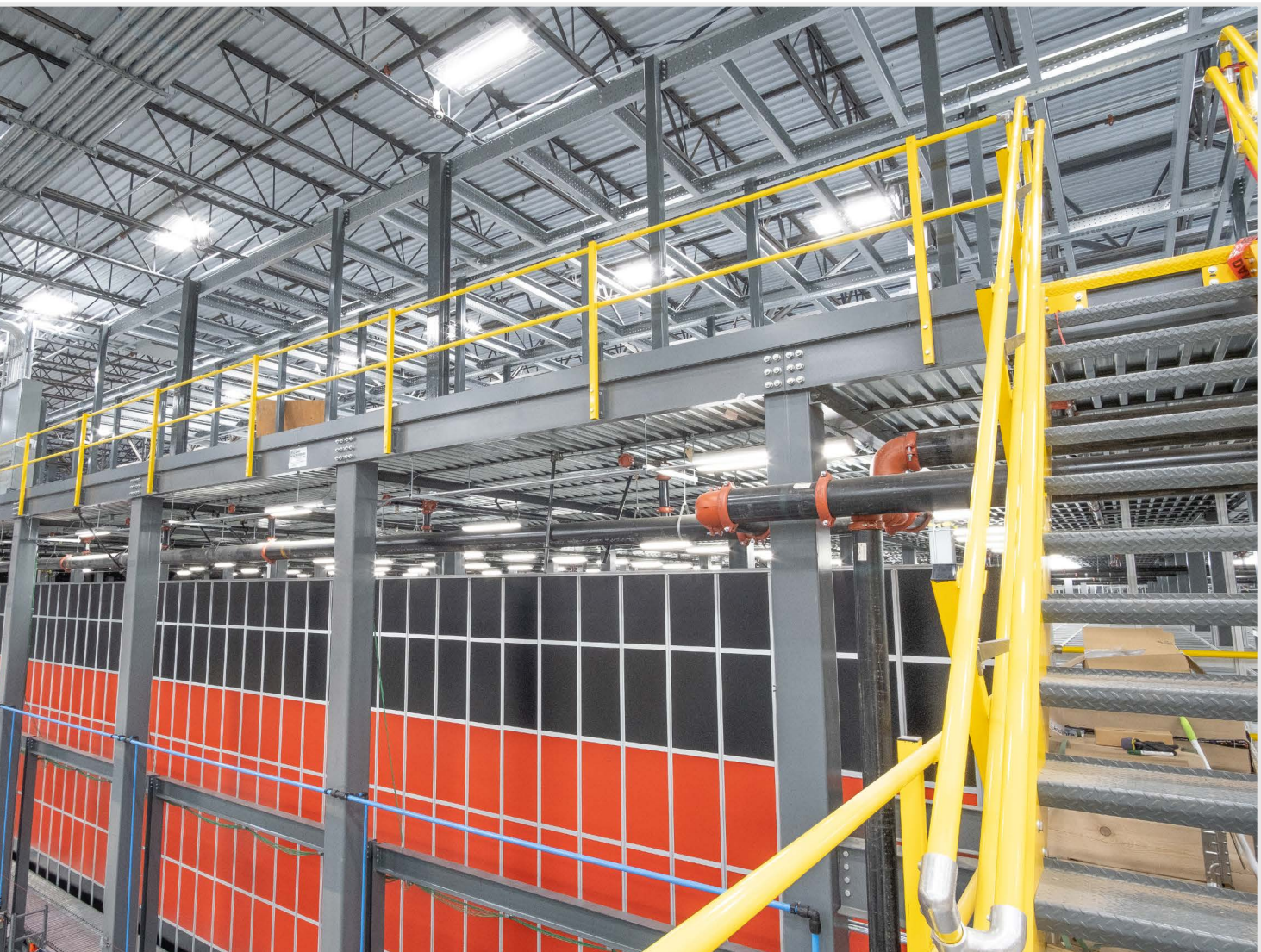
PLATFORMS

INNOVATIVE PLATFORM DESIGNS

Steel work and equipment platforms provide substantial benefits at a fraction of the cost of what it might be to move operations into a new space. Our team of experts work side by side with you to design a solution that unlocks the full potential of your new or existing facility.

Advantages of work and equipment platforms include:

- Increased storage space
- Enhanced worker productivity
- Streamlined product flow
- Faster access to critical machinery and equipment





WORLD-CLASS PLATFORM SOLUTIONS

Steele Solutions' innovative platforms have been installed in all 50 states and in countries around the world. Our experienced engineering team is equipped with a deep understanding of building codes and regulations to ensure your platform is installed safely and correctly.

We provide consultation, design, fabrication, and delivery of everything from small storage platforms to highly complex work and equipment structures. Our experts work side by side with you to design structures that meet your requirements and specifications.

Unlock the full potential of your facility with Steele Solutions' innovative platform designs. Ready to maximize your space and boost productivity? Contact us today.

PLATFORMS

THE STEELE ADVANTAGE: LESS IS MORE

Our engineers have discovered that less is better. Here are a few examples of using less to gain more. These benefits result in safer platforms which assemble easier, quicker, and with fewer components.



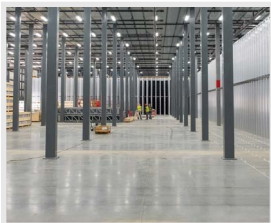
MOMENT CONNECTION

In structural design, a Moment Connection is a connection joint between a beam and a column where the end of the beam is restrained from rotating—a rigid frame is created without the use of conventional cross-bracing. Steele Solutions' beam bolts directly to the face of the column, making it the easiest connection to install in the industry. Fewer bolts, bracing, and no plates allow for safe and fast installation.



NO CROSS OR KNEE BRACING

Knee bracing adds significant time to installation and reduces space for conveyors and other mechanical equipment.



MORE USABLE SPACE

Our Moment Connection design allows for longer column runs and creates open spaces to maximize a facility's usable space.



FEWER COMPONENTS

Our designs are streamlined to minimize the number of components required, delivering significant savings in time and costs associated with handling, storage, identification, and installation.

TRUSTED BY INDUSTRY LEADERS

Steele Solutions has grown over the years because we prioritize relationship-building and we deliver high-quality products. We collaborate closely with our clients to tailor solutions to meet their unique needs, ensuring a streamlined process from design through installation and beyond.

Every day, leading companies in the e-commerce, retail, distribution, and manufacturing industries utilize our platforms to operate their facilities safely and efficiently.

VERSATILITY

Our platform solutions are designed to fit your current floor plan, to accommodate equipment, to improve access to inventory—or all of the above.

MAXIMIZE SPACE

Steele Solutions' team of experienced engineers can transform unused space into an area for storage, machinery, or maintenance access. Every inch of space matters, and we help you enhance your facilities' capabilities with efficient, custom solutions.

SAFETY

Safety is paramount in industrial and commercial spaces. Each platform is engineered to meet rigorous strength and stability standards and includes safety features like guardrails and kick plates to protect personnel.



PLATFORMS

DURABLE DECKING SOLUTIONS

Steele Solutions offers a variety of decking options for your work and equipment platforms. All of our decking materials have long-lasting strength, durability, and a professional look and feel.

The type of decking required may vary based on application and code requirements. Our team of trusted experts can help you choose the right solution for your needs.



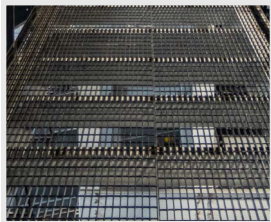
RESINDEK®

We've partnered with floor decking specialist ResinDek® to deliver a durable and reliable wood deck finish. ResinDek® is layered on top of our 20-gauge type B (wide-rib) roof decking to provide a strong, solid flooring surface. LD, MD, HD, WR, MAX and Xspan® ResinDek® are available.



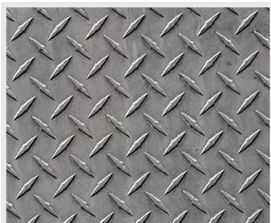
ROOF DECK

Our 20 gauge Type B roof decking can be used for custom flooring applications such as concrete. The bottom of roof decking is painted bright white to enhance reflectivity and reduce the amount of light required to illuminate the underside of a platform.



BAR GRATING

Bar grating is a common option for platforms, catwalks, and conveyor systems. Welded steel bar grating offers strength and reliability while letting air and light pass through the surface.



FLOOR PLATE

Offered in both diamond pattern and smooth finishes, floor plate is used for heavy-duty applications. Made of ¼" thick or 12 gauge steel, this option offers an outstanding combination of both durability and safety.

Enhance the durability and aesthetics of your work and equipment platforms with our top-quality decking solutions. Ready to find the perfect decking material for your application? Contact Steele Solutions today.

FRAMING SOLUTIONS FOR EVERY APPLICATION

At Steele Solutions, our framing options cover everything from small storage platforms to complex, heavy-load equipment platforms. The type of framing needed will depend on various factors such as size, application, and site location.

FRAMING EXPERTISE

Our experienced engineers work closely with you to understand your requirements and design a framing solution that meets your needs. We take into account factors such as:

- Load requirements
- Platform size and shape
- Site conditions and constraints
- Applicable building codes and regulations

QUALITY MATERIALS, TURNKEY IMPLEMENTATION

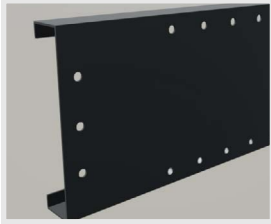
All of our framing components are manufactured using high-quality steel and state-of-the-art equipment. Framing systems are designed for efficient installation, minimizing on-site construction time and reducing overall project costs.

FRAMING GUIDE					
	C-SECTION/ STEELETRAX	BEAM & C-SECTION	BEAM & BEAM	BEAM & BAR JOIST	BAR JOIST & GIRDER JOIST
SIZE	Small-Medium	All	All	Medium-Large	Medium-Large
ADVANTAGES	Most cost efficient Quicker delivery	Flexibility in column location (span) allows cantilevers quicker delivery	Greatest flexibility in column spans specific point loads Higher point loads	Large spans open web, which easily allows conduit or pipes to pass thru	Large spans open web, which easily allows conduit or pipes to pass thru
LIMITATIONS	Column spacing	Cost, compared to all C-Section design Slab capacity	Cost Slab capacity	Depth of structure Cost Slab capacity	Depth of structure Cost Slab capacity

PLATFORMS

STEELETRAX

SteeleTrax is a versatile solution for suspending pocket sorters, fire suppression systems, lighting, and other mechanical equipment. Standard SteeleTrax comes with holes on the top and bottom spaced 50mm on center, consistent with industry standards. Custom hole patterns are available.



Our experienced engineers will work closely with you to understand your requirements and design a SteeleTrax solution that meets your needs.

We take into account factors such as:

- Load requirements
- Structure: Open-Grid or Decked Platform
- Suspension point locations
- Applicable building codes and regulations



STEELETRAX SPECIFICATIONS

PROFILE DEPTHS	THICKNESSES	LENGTHS
8 - 18"	14 Gauge - 1/4"	Max 20'

STANDARD C-SECTIONS

C-Sections provide excellent stability and durability. Their lightweight design is ideal for maximizing cost-efficiency. They are primarily used as joists in platform design.

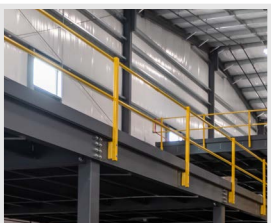


STANDARD C-SECTION SPECIFICATIONS

PROFILE DEPTHS	THICKNESSES	LENGTHS
8 - 18"	14 Gauge - 1/4"	Max 20'

STANDARD RAILING

Railing is an essential component of platform systems, providing safety and stability for workers and material. Railing systems are designed to comply with all building and safety regulations.

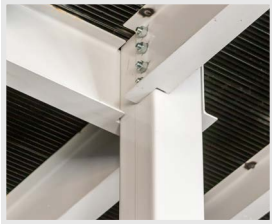


Railing Options:

- **Round:** Sleek 1 5/8" diameter steel pipe
- **Square:** Sturdy 1 1/2" x 1 1/2" steel tube
- Optional netting available

STANDARD WIDE FLANGE BEAMS

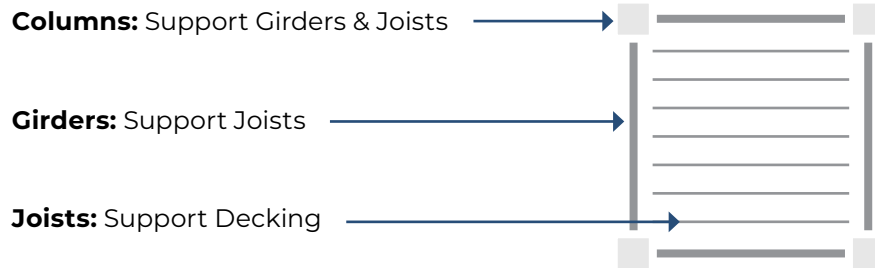
Beams are typically required for structures with high loading requirements and large spans. Standard wide flange beams offer incredible strength and come with a professional powder-coat finish.



Specifications

- Beams are offered in a variety of depths, lengths, and widths.
- Our expert engineers can assist in determining the optimal framing structure that maximizes efficiency and meets all applicable loading requirements and codes.
- Beams can be used as both joists and girders in platform design.

TYPICAL PLATFORM LAYOUT



STANDARD COLUMNS

Columns are a critical component in platform design. Standard HSS (Hollow Structural Sections) columns are fabricated using our state-of-the-art manufacturing equipment, ensuring a high standard of quality.



Specifications

- Columns are offered in a variety of heights, depths, and thicknesses
- Column sizing and spacing play critical roles in the load capacity of a platform
- Column base plates are typically 6" wider than column dimensions

PLATFORM ACCESSORIES

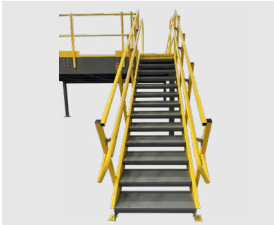
STAIRS DESIGNED FOR INDUSTRIAL USE

Stairs are designed to provide safe access for traveling up and down platforms. They may provide access from the floor level to a platform or connect two levels of a multi-level platform. At Steele Solutions, we prioritize safe, durable stairs with a focus on quality and ease of installation.



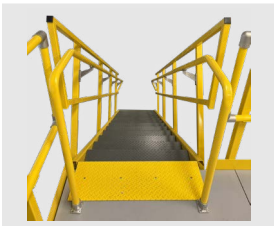
SAFETY AND COMPLIANCE

Safety is our top priority. Our stairs are designed and manufactured to meet or exceed the latest OSHA and IBC safety standards, ensuring a safe and secure environment for your employees and visitors.



DURABLE CONSTRUCTION

Our stairs are constructed using high-quality, durable materials designed to withstand the demands of industrial environments. Their robust construction ensures long-lasting performance and minimal maintenance requirements.



CUSTOMIZABLE OPTIONS

We offer a range of options to suit your specific needs, including:

- Railing system featuring round handrail and square guardrail
- Diamond plate or bar grating treads
- Multiple design standards to meet the maintenance and egress requirements for your space and layout
- Stair landings used where required by code and upon request for safety and convenience



SIMPLIFIED DESIGN STREAMLINES INSTALLATION

Pre-welded stringers, upright posts, and guardrail reduce installation hours, helping keep project timelines on track. The streamlined design minimizes components, which enhances logistical efficiency and reduces the potential for errors throughout the installation process.

ENHANCE SAFETY AND EFFICIENCY WITH INDUSTRIAL GATES

Gates provide safe access to a platform system. Our gates are designed with optimal protection in mind and enable increased efficiency of operations. Additional fall protection (not included) may be required for gate systems.



SINGLE SWING GATE

- Two-Rail, swing-in design
- Can be assembled to open from right or left
- 6' Wide Opening
- Locks when not in use



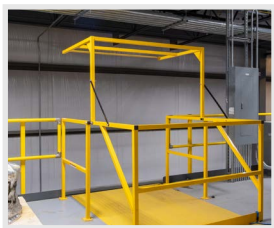
BI-SWING GATE

- Two-Rail, swing-in design
- Designed for smooth opening and closing
- 6' Wide Opening
- Locks when not in use



SLIDE GATE

- Premium roller wheels enable smooth operation
- Seamlessly integrates with Steele Solutions' railing system
- 6' Wide Opening
- Locks when not in use



PIVOT GATES

- For safely transporting pallets and other materials to and from a platform
- Seamlessly integrates with Steele Solutions' railing system
- 6' Wide Opening
- When one side opens, the other side closes, ensuring continuous railing along the deck edge

PLATFORM ACCESSORIES

LADDERS DESIGNED FOR INDUSTRIAL USE

Ladders provide safe and efficient access to platforms and other key areas of a facility. Designed to provide optimal stability and durability, our ladders will withstand repeated use. We offer a complete selection of industry-standard ladders that comply with all safety regulations.

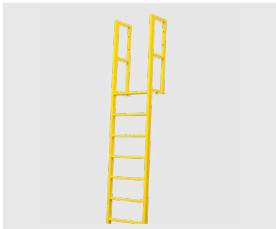


CAGED LADDERS

- Diamond tread ladder rungs
- Optional self-closing swing gate available
- Delivered in 1' increments and can be field cut to the exact height required

SPECIFICATIONS

HEIGHTS (Top of Deck)	8' - 20'
TREAD WIDTH	24"
MATERIAL	3/8" steel ladder rail



STRAIGHT LADDERS

- Diamond tread ladder rungs for safety
- Optional self-closing swing gate available
- Delivered in 1' increments and can be field cut to the exact height required

SPECIFICATIONS

HEIGHTS (Top of Deck)	Up to 20'
TREAD WIDTH	24"
MATERIAL	11-gauge steel

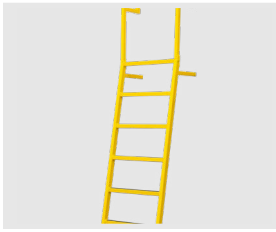


SHIPS LADDERS

- Anti-slip ladder rungs
- Optional self-closing swing gate available
- Pre-engineered designs available in 1/2" increments

SPECIFICATIONS

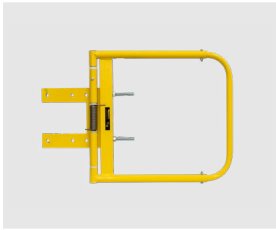
HEIGHTS (Top of Deck)	Up to 20'
TREAD WIDTH	24"
PITCHES	60° (3'-5'H), 65° (5'-15'H)
MATERIAL	11-gauge steel



BENT LADDERS

- Anti-slip ladder rungs
- Optional self-closing swing gate available
- Can be field cut to the exact height required

SPECIFICATIONS	
HEIGHTS (Top of Deck)	Up to 20'
TREAD WIDTH	24"
PITCHES	80°
MATERIAL	11-gauge steel



LADDER GATES

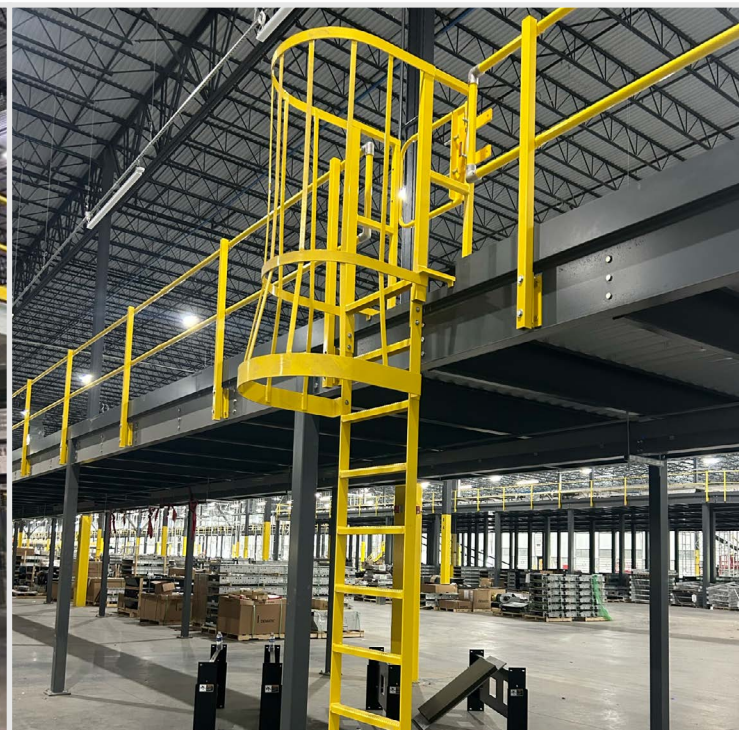
- Provides added security
- Convenient self-closing design
- Installation hardware included

SPECIFICATIONS	
MATERIAL	Powder-Coated Steel
FITS OPENINGS	24" - 37"
FINISH	Safety Yellow

SAFETY AND COMPLIANCE

Our ladders are designed and manufactured to meet the latest IBC and OSHA safety standards, ensuring a safe working environment for your employees.

Enhance the safety and efficiency of your platform system with our range of industrial ladders. Ready to upgrade your facility? Contact Steele Solutions today.

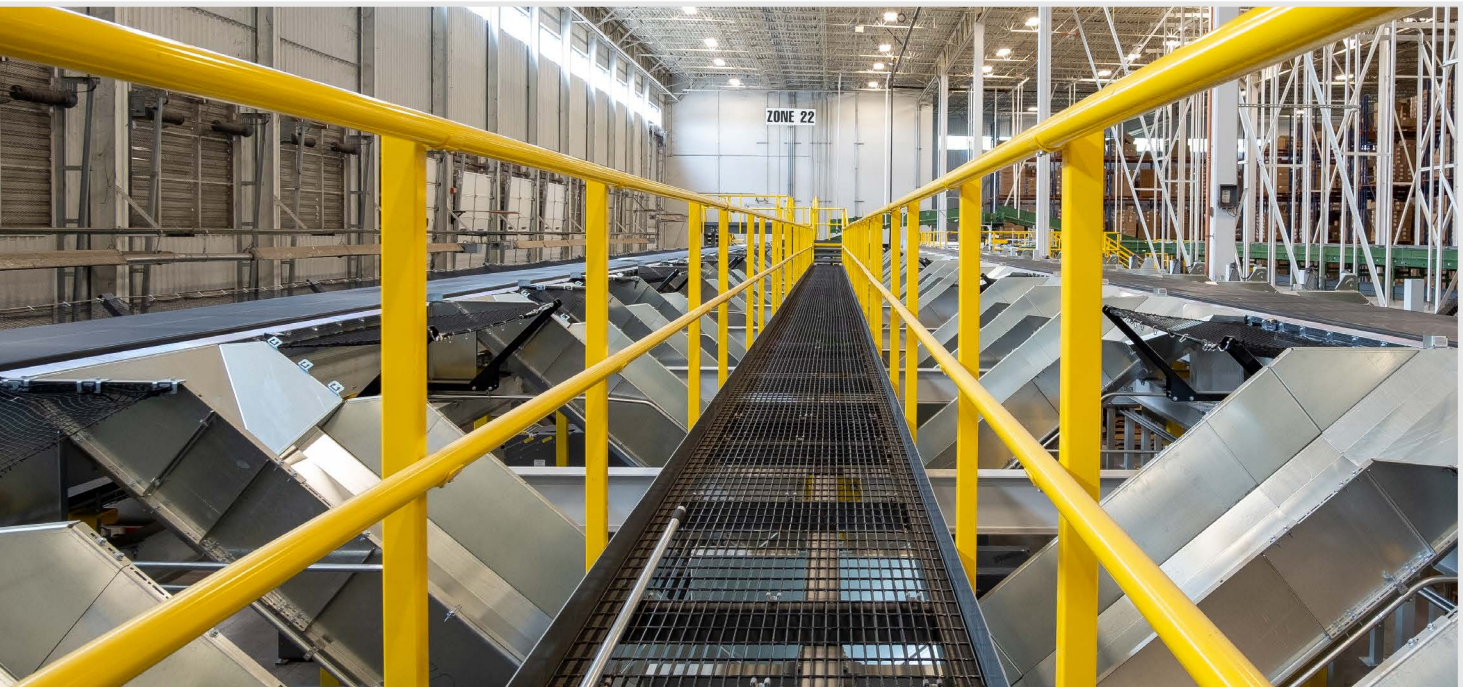


PLATFORM ACCESSORIES

INDUSTRIAL CATWALKS SERVE AS ELEVATED WALKWAYS FOR SAFE ACCESS

Catwalks offer safe and convenient access to conveyor systems and other critical mechanical equipment. We pride ourselves on delivering quality and reliable catwalk solutions so you never have to worry about employees having safe access to important areas.

Catwalks can be ceiling-hung, structure-supported, or floor-supported, depending on the design of the facility. Our experts listen to your needs and carefully study the facility layout to determine the optimal design for your catwalk system.



STEELE SOLUTIONS IS THE LEADING INDUSTRIAL CATWALK PROVIDER

Steele Solutions' catwalks are made of durable, industry-grade steel with a professional powder-coated finish. Our catwalks have been installed in distribution, fulfillment, and sortation centers across the United States. Top companies in the e-commerce and retail industries trust our catwalks to provide access to critical machinery and equipment.

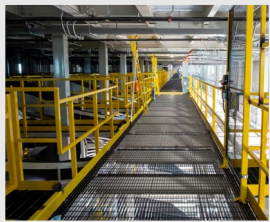
At Steele Solutions, we listen and respond to your catwalk requirements to design a solution that meets your needs. It is our mission to ensure you never have to worry about a major delay in operations.

CATWALKS DESIGNED TO MEET YOUR NEEDS



STRATEGIC DESIGN

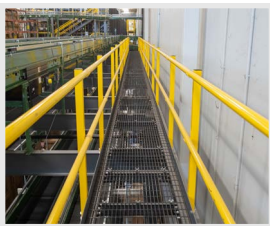
Our engineers take a detailed look at the layout of the facility to design the most efficient catwalk system that complies with code requirements. Our team crafts structural drawings of where your catwalk would be installed, including details about the positioning of the catwalk. We consider the elevation of the principal structure along with the required elevation of the walkway surface.



FLOORING

Our catwalks are offered with two flooring options:

- ResinDek® is a heavy-duty wood flooring panel that provides a durable, solid surface. Layered on top of 20-gauge steel roof decking, this option provides a comfortable and professional-looking walking surface.
- Bar grating offers great strength and reliability. Ideal for situations where air and light should pass through.



ASSEMBLY

The modular design of our catwalks saves on expensive freight costs and provides installers the ability to perform in-field modifications seamlessly.

- Lengths: Catwalks are shipped unassembled in 12' sections, which can be easily connected together. These sections can be field-modified to a shorter length to accommodate any situation.
- Widths: We offer catwalks in nominal widths of 24, 30, and 38".



PLATFORM ACCESSORIES

DURABLE CROSSOVERS FOR YOUR FACILITY

Crossovers allow workers to safely and efficiently navigate an industrial facility. Their primary use is to travel over conveyor systems, machinery, and other obstacles found throughout the workplace.

Steele Solutions offers a full selection of industrial-grade crossovers that can be installed in new or existing facilities.

BUILT ACCORDING TO CEMA GUIDELINES

Our crossovers are designed and fabricated according to Conveyor Equipment Manufacturers Association (CEMA) guidelines. We follow these guidelines carefully to ensure you receive a crossover that consistently performs as expected.

CROSSOVER TYPES

The type of crossover required will depend on the facility layout, equipment to be traversed, and end-user preference. We offer a full selection of crossover designs to meet various applications.



TYPE 1

Also known as Step-Overs, type 1 crossovers feature vertical ladders that allow workers to step directly over conveyors or other equipment. Single-wide and double-wide options are available.

Specifications:

- Ladder Heights (Top Rung): 2' – 5'
- Clear Spans: 1" – 50"
- Clear Width: 24"
- Durable 14-gauge square railing
- Modular design allows for efficient installation and in-field modification
- Quick Turnaround: Product ships within two weeks



TYPE 2

Type 2 crossovers feature stairs that allow workers to step directly over conveyors or other equipment.

Type 2 crossovers are constructed of durable, high-quality steel and are designed to match the end user's application. Our team will work with you to create the most efficient design that meets code requirements.



TYPE 3

Type 3 crossovers are elevated crossovers that allow workers to traverse over conveyors or other obstructions using vertical ladders connected by a diamond floor plated walkway.

These crossovers are ideal where space is limited:

- Clear Heights (Under Walkway): 67, 79, 91"
- Clear Spans: 23, 35, 47, 59, 71, 83, 95, 107"
- Clear Width: 26"
- Durable 14-gauge round railing
- Modular design allows for efficient installation and in-field modification
- Quick turnaround: Product ships within four weeks



TYPE 4

Elevated type 4 crossovers provide up-and-down access via stairs, a full railing system, and decking. Type 4 crossovers are generally used in publicly accessible areas or where the crossover is the primary route for workers.

In most industrial applications, type 4 crossovers are custom-designed to meet facility specifications and requirements. We have experience designing and manufacturing custom type 4 crossovers for various packaging, industrial and warehousing environments.

Ensure safe and efficient navigation across your facility with our durable industrial crossovers. Ready to enhance your workplace with compliant, reliable solutions? Contact Steele Solutions today.

CHUTES

SST™ CHUTES ARE THE GOLD STANDARD

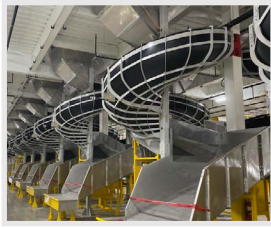
Conventional chutes can often cause material flow issues, but our patented Slick Surface Technology (SST™) enables packages to move faster and more efficiently. How? With ultra-high molecular weight polyethylene.

- Allows self-starting at angles up to 25% shallower than standard steel chutes.
- Fully customizable options with few restrictions on width, side guard height, or pitch.
- SST™ Gravity Chutes can be delivered assembled and ready for installation, or knock down to be assembled onsite.
- Multiple types of UHMW materials are available to support specific package requirements.



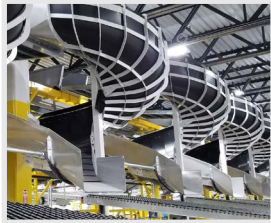
- FDA-approved UHMW material is available for food and beverage applications.
- UHMW is non-ferrous and most commonly supplied with anti-static properties.
- Utilized in many of the most dynamic and demanding applications for package transfer and sortation.





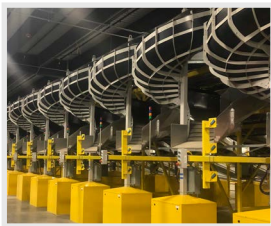
LOW-FRICTION UHMW-PE CHUTES

Ultra-high molecular weight polyethylene (UHMW-PE/UHMW) is an extremely tough plastic with high abrasion and wear resistance. The versatility of polyethylene has made it a popular plastic for countless industrial applications that require durability, low friction, and chemical resistance.



MOVE PACKAGES FASTER

The low coefficient of friction of UHMW enables efficient package flow and allows damp packages to maintain speed. Alternative materials, such as fiberglass and steel, can be impacted by environmental factors which cause packages to stick to the sliding surface. UHMW has been proven to perform better than conventional steel and fiberglass chutes.

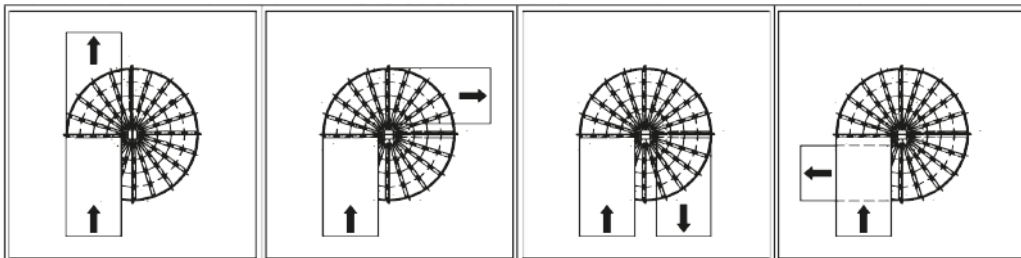


3D CHUTE SIMULATIONS

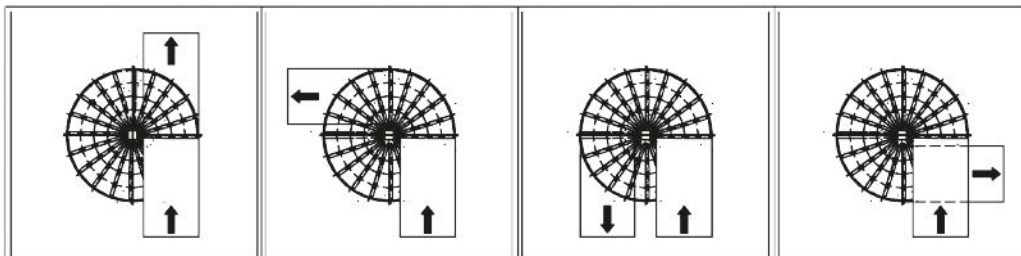
Steele Solutions works hand-in-hand with customers to create custom chute solutions. Our 3D Simulation Software allows us to model chutes prior to performing customer factory acceptance tests (FAT). If necessary, we can upload your project model to run simulations and make necessary modifications that pertain to package flow.

ENTRY/EXIT CONFIGURATIONS

Right Decline (Clockwise)



Left Decline (Counter-Clockwise)



CHUTES

IMPROVE WORKFLOW WITH STEEL GRAVITY CHUTES

Steel gravity chutes enhance operations by enabling the more efficient movement of materials throughout a facility.

Steele Solutions' gravity chutes are:

- Fully customizable
- Available in galvanized or stainless steel
- Able to be manufactured in several steel gauges
- Capable of handling a wide variety of packages and material
- Manufactured using state-of-art, precision equipment
- Able to be equipped with several safety features
- Built to withstand the most demanding environments



CUSTOM-DESIGNED SOLUTIONS

Our expert engineering team and precise manufacturing allow us to create a customized solution tailored to your needs. In fact, our team has designed, manufactured, and installed various chute types in locations around the world.

Our fully customizable chutes, available in galvanized or stainless steel, are used in distribution, sortation, and manufacturing facilities. Our versatile portfolio of capabilities includes straight, spiral, primary and outbound, chimney, slides and transfers, and butterfly chutes, to name a few.

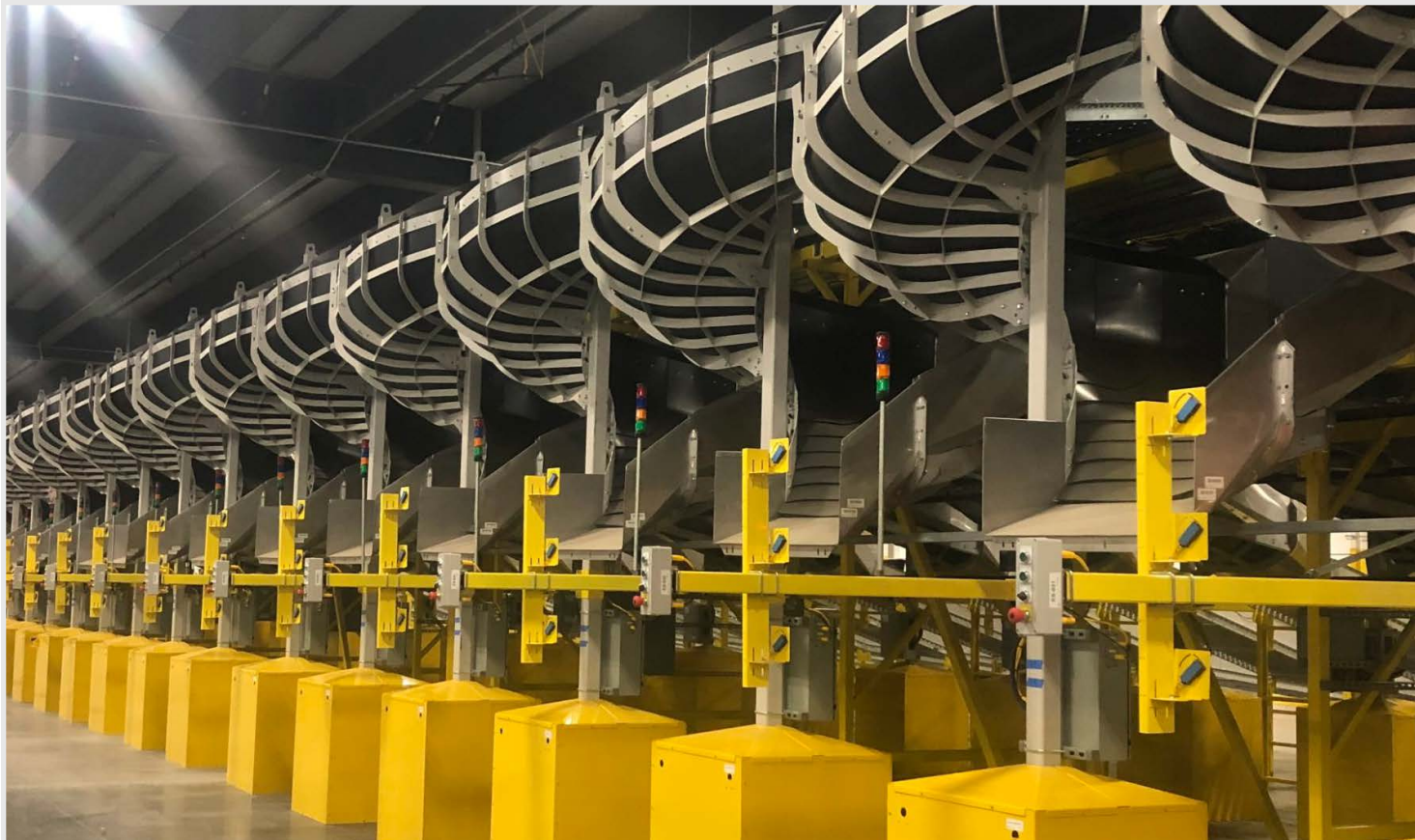
YOUR CHUTE PROVIDER

At Steele Solutions, we deliver a portfolio of chute products designed to enhance material flow, optimize efficiency, and ensure smooth operations in distribution, fulfillment, and sortation centers.

With over 25 years of industry expertise, our chute designs offer unmatched durability and performance across a wide range of applications. We invite you to explore our wide range of chute capabilities and discover the right solution for your needs.

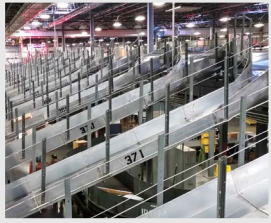
Our team at Steele Solutions is proud to be a solution-focused company. Bring us your most complex problems, and we'll work with you to develop a product solution focused on improving effectiveness and efficiency, no matter the application. We'd love the opportunity to earn your business.

Custom designed chutes are our business, and with that comes quality and integrity that goes into every project.



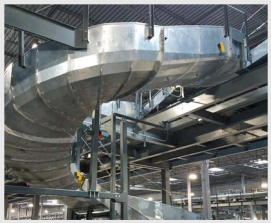
CHUTES

COMMON CHUTE TYPES



STRAIGHT CHUTE

A common chute for straight sections, this chute can be manufactured with a customizable height, width, entry, and exit.



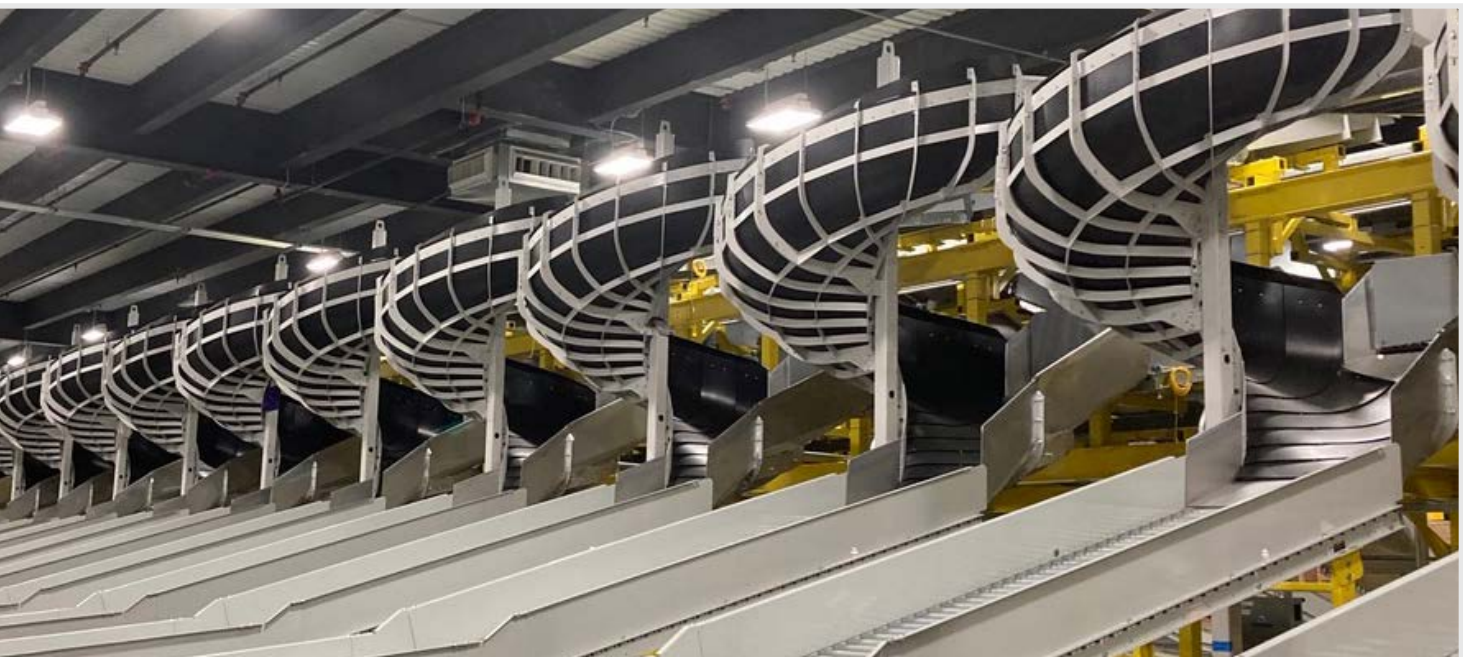
SPIRAL CHUTE

Spiral chutes are often used to move material from one elevation to another. Spiral chutes are available in Single Entry and Multi-Entry options.



PRIMARY SORTER CHUTE

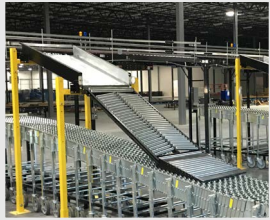
Primary sorter chutes are used to divert material from the main sorting conveyor to specific outbound conveyors, bins, or areas.





OUTBOUND SORTER CHUTE

Outbound chutes direct material from a sorter to their final destination for shipment or dispatch.



SLIDES AND TRANSFERS

Designed to handle the flow of products from one system to another, these chutes are commonly used to transition from bulk flow areas to more controlled, specialized flow areas.

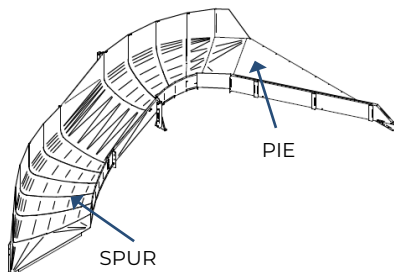


BUTTERFLY CHUTE

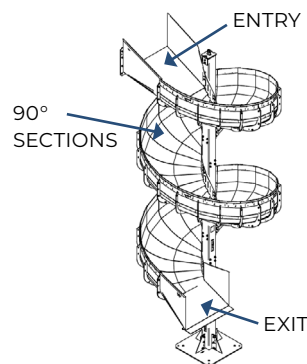
Butterfly chutes efficiently manage the flow of product from two parallel sorters into a single destination while saving space.

COMMON CHUTE FEATURES

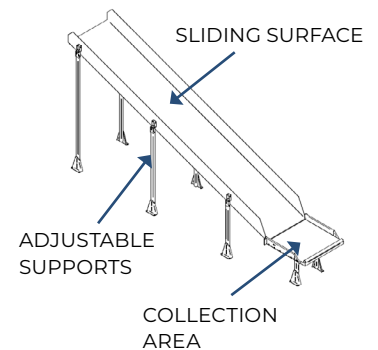
SORTER CHUTES



SPIRAL CHUTES



STRAIGHT CHUTES



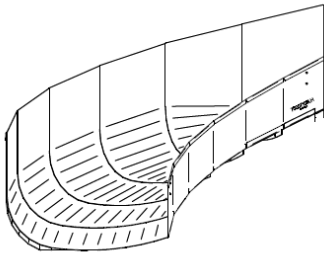
Need a custom chute? Our experienced team can design a unique solution based on your application and requirements. Contact Steele Solutions today.

CHUTES

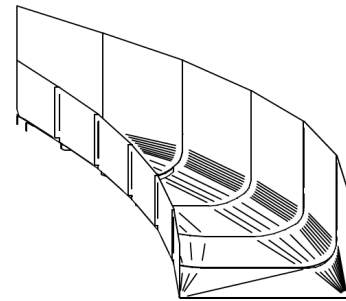
PARCEL CHUTES

For over 25 years, we have been a trusted manufacturer of high-quality chutes for the parcel industry. Our products are built to meet all end-user specifications, ensuring seamless integration and optimal performance. Engineered for durability and precision, our chutes deliver reliable, long-lasting solutions for the most demanding environments.

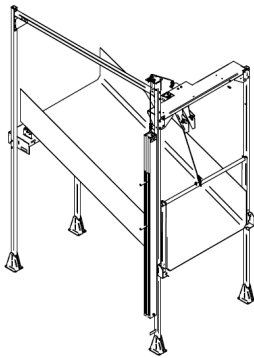
90° SPIRAL CHUTES



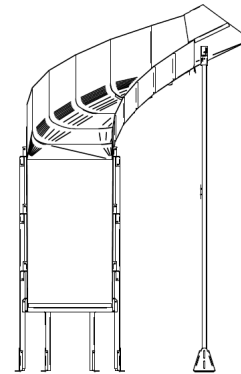
HIGH VOLUME DIRECT CHUTES



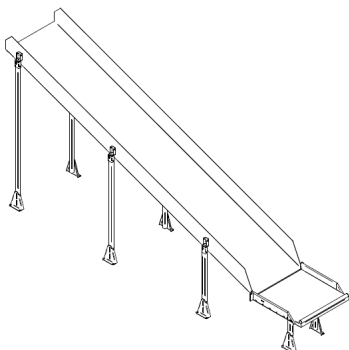
STEEL PIVOTING CHUTES



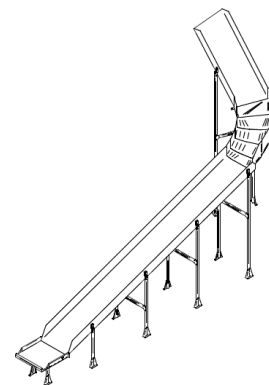
L.V.D. MIS-SORT CHUTE



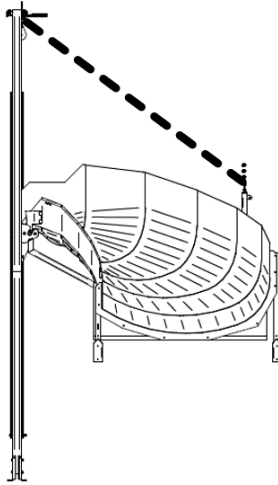
L.V.D. MIS-SORT CHUTE (STRAIGHT)



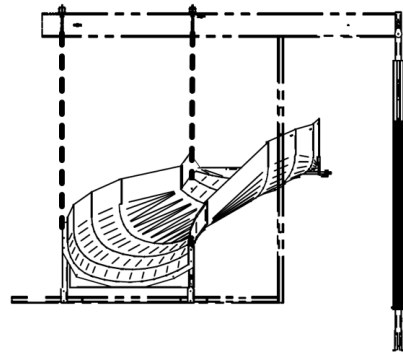
H.V.D. MIS-SORT CHUTE



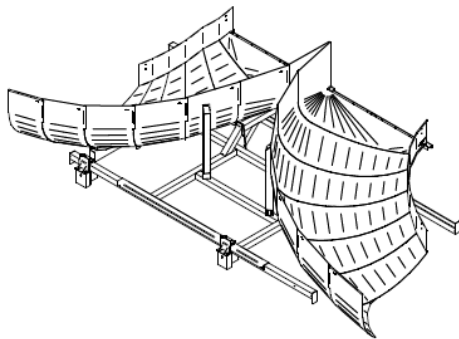
LIFTABLE 90° SPIRAL CHUTE



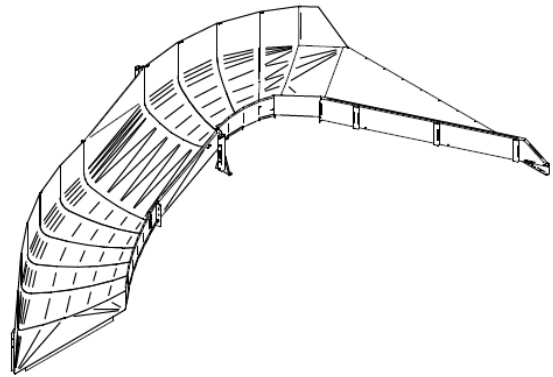
LIFTABLE S-CHUTE



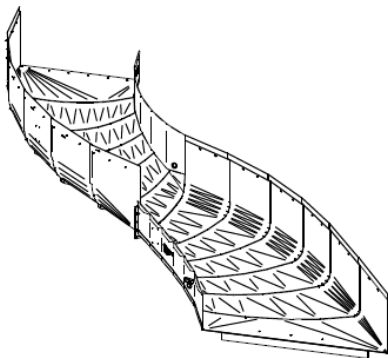
DOUBLE 90° MOVABLE AM/PM CHUTE



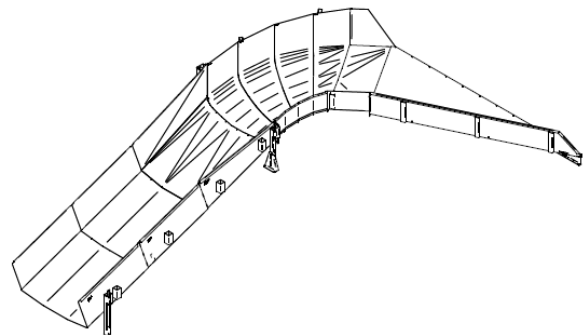
PRIMARY CHUTE – SHOE SORTER



RECIRCULATION CHUTE



OUTBOUND CHUTE



MATERIAL HANDLING

INCREASE EFFICIENCY AND ORDER ACCURACY WITH PUT WALLS

Looking to increase efficiency and order accuracy in your piece-picking operations? Put Walls are invaluable in e-commerce facilities where products are placed in individual compartments corresponding to particular customer orders.

Steele Solutions designs and manufactures Put Walls for order fulfillment and piece-picking applications, increasing packaging efficiency and shipping accuracy. In fact, our Put Walls can be easily integrated with light or voice-directed order fulfillment software (not included).



Here are just some of the benefits of Put Wall systems:

- Modular and scalable
- Enhanced operational efficiency
- Increased order accuracy
- Ability to process single and multi-line orders
- Real-time visibility
- Efficient space utilization
- Improved labor efficiency
- Reduced training time for new employees

VERSATILE SOLUTIONS FOR YOUR UNIQUE APPLICATIONS

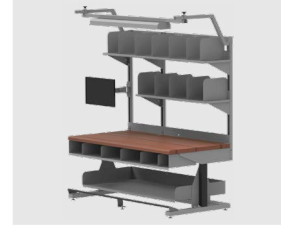
Our suite of material handling products can be used for a variety of applications. From order fulfillment to returns processing, Steele Solutions is your partner for versatile material handling solutions.



Picking and Transporting



Order Consolidation



Packing and Shipping



AUTOMATION HAMPERS

- Automatically keeps packages at an ideal picking height
- Fully automated operation via advanced controls and sensors
- Durable casters enable hampers to be moved throughout a facility
- Increased efficiency in sorting and shipping processes



CUSTOM PICK CARTS

- Built to reduce pick times and boost order fulfillment speed
- Customizable shelves and dividers to fit operational needs
- Improved ergonomics for employees, reducing the risk of strain and injury



ERGONOMIC WORKSTATIONS

- Designed to support faster picking, packing, and shipping operations
- Configurable dimensions to suit operational needs
- Available in galvanized and stainless steel

AUTOMATION

CONTROLS AND AUTOMATED MATERIAL HANDLING SOLUTIONS

Steele Solutions' purpose-built material handling controls division, SSI Automation, focuses on delivering intelligent, turnkey controls and automation solutions, leveraging process automation and QA-driven workflows to ensure consistent, repeatable delivery.



THE SSI AUTOMATION APPROACH USES:

- Modular, reusable codebase
- Pre-tested templates
- Emulation and digital twin validation
- Built-in diagnostics

For our customers, this means faster development, cleaner commissioning, and a more reliable outcome. Most importantly, we're not locked into any one hardware vendor—we're committed to being platform-agnostic.

Unlike traditional control providers who rebuild from scratch every time, we leverage modular architecture, emulation-first logic, and diagnostic-ready design to reduce project risk, accelerate timelines, and scale efficiently—all backed by Steele Solutions' decades of industry expertise.

SSI AUTOMATION AND CONTROL SERVICES



CONTROLS: PLC/HMI PROGRAMMING

- Modular logic development, reusable libraries
- Emulation-ready architecture for early validation
- HMI Design templates
- Pre-built UX and interface standards for consistent deployment
- Platform-agnostic, with modular pre-tested templates using Rockwell Studio 5000, Emulate3D, AutoCAD Electrical, Siemens TIA and more.



ELECTRICAL DESIGN AND PANEL BUILD

- AutoCAD Electrical templates and project-specific BOMs
- Coordination with preferred or local panel shops
- Support for UL, CE, or Custom spec panels
- Integrated with installation planning



INSTALL SUPPORT

- Field coordination with customer and installation crews
- Electrical inspection and redline feedback during install
- Troubleshooting of field wiring and scanner integration
- Closeout package validation with electrical and I/O readiness



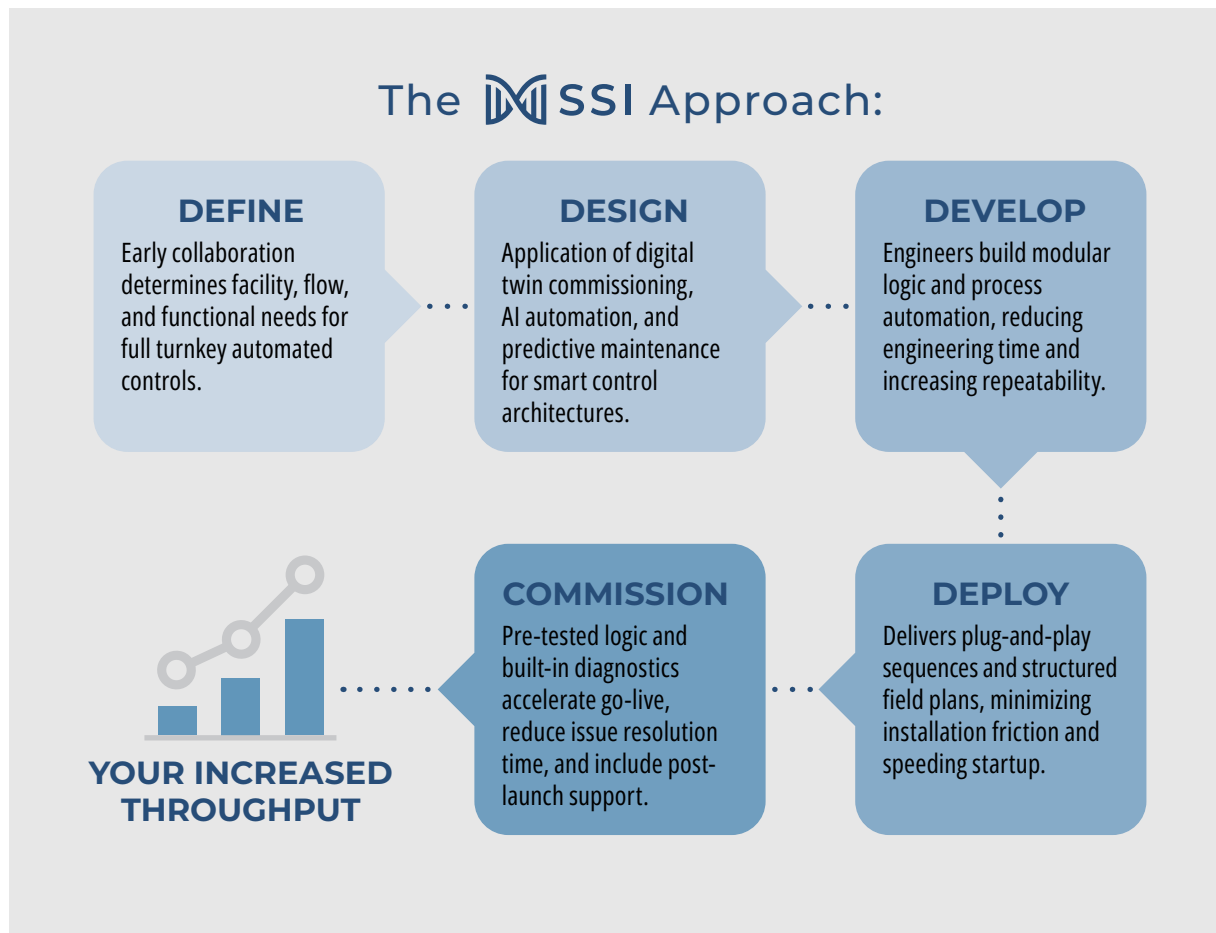
COMMISSIONING AND LIFECYCLE SUPPORT

- On-site or remote commissioning deployment
- Start-up SOPs, QA checklists and playbooks, and punch-list tracking
- Retrofit tuning, rewire projects, or WCS logic upgrades
- Post-go-live support with option for SLA coverage

AUTOMATION











OPTIMIZE SPEED AND PERFORMANCE

Traditional controls execution is slow, inconsistent, and poorly integrated across partners. At Steele Solutions, we follow a structured approach: Define, Design, Develop, Deploy, and Commission.



We plug into your process; not the other way around.
From estimating to startup, our structured approach
keeps your projects moving and your customers happy.

THE STEELE SOLUTION DIFFERENCE

KEY SERVICES	TRADITIONAL AUTOMATION DEPLOYMENTS	SSI AUTOMATION
Code Logic	 Rebuild logic every project	 Modular reusable codebase
Testing/Debugging	 Debug on-site	 Emulation-tested logic before install
Commissioning	 Prolonged commissioning cycles	 Faster go-live (Plug-and-play startup)
Diagnostics	 Add-on/Custom	 Diagnostics built into every system (Diagnostic-ready)
Platform	 Often proprietary/ Vendor locked	 Platform agnostic

We're not just delivering a project—we're changing the way controls are done in material handling.



CONNECTORIZED, MODULAR DESIGN:

That's not a concept for us; it's the foundation of how we deliver faster, cleaner, and more scalable systems.



PLATFORM FLEXIBILITY WITH PROVEN RESULTS:

We've deployed and integrated distributed architectures across multiple platforms, with redundancy, safety, and performance built in from the start.



ALIGNMENT WITH MODERN OPERATIONAL PRIORITIES:

From distributed power and rapid field-connect systems to multi-sourced components and pre-validated configurations, our designs are engineered to deploy quickly and operate reliably—anywhere.



PRACTICAL COMPLIANCE EXPERTISE:

We know how to navigate specifications, regulations, and client standards without compromising scalability or safety.



RETROFITS AND RE-CONTROLS EXPERIENCE:

We bring modern, standardized controls to existing systems. These projects prove our approach and create immediate value for operators.

Steele Solutions' controls and automated material handling solutions stand out because it offers execution without compromise.

LOCKERS

EVIDENCE LOCKERS

Chain of custody is critical in the handling of evidence. We've designed evidence locker systems to meet your department's needs with security and functionality in mind. Our products are built to meet the rigorous demands of public safety professionals with the following key features:



- 38 standard configurations
- Pass-back digital locking option
- 16-gauge construction
- Variety of lock options available
- Stand-alone and integral refrigeration options available
- Available in both pass-thru and non-pass-thru models



DOOR CONFIGURATIONS

Evidence lockers are available in several door configurations, including 18"W, 24"W, and 36"W. All lockers are 24"D x 82"H, including a 4" attached base.



REFRIGERATED EVIDENCE LOCKERS

Refrigerated evidence lockers are also available with height options of 42" and 82". Refrigerated evidence lockers come with multiple door insert options.

Ready to upgrade your evidence storage? Talk with a Steele Solutions team member today to learn more about our full range of available configurations and options.

SMART EVIDENCE LOCKERS

Evidence management plays a vital role in the outcome of criminal prosecutions, and the chain of custody is a critical factor. To address this crucial need, we've developed a cutting-edge locker solution designed to automatically track and store essential data.

By combining the reliability of Tiffin Evidence Lockers with the advanced Verapass® evidence software, our comprehensive smart evidence locker solution ensures secure evidence management.

When you choose Steele Solutions' smart evidence lockers, you can achieve a higher level of security and enable officers to spend more time in the field protecting and serving your communities.

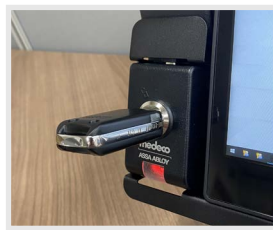


- No hard-wiring required
- User-friendly interface
- Controlled access via intelligent locking system
- Electronic audit trail
- Compatibility with all Tiffin evidence lockers
- Biometric authentication
- Reports to show all activities
- Retrofit options for existing evidence lockers

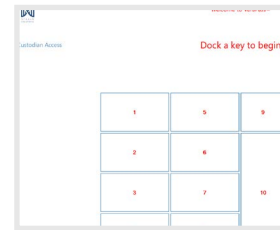
FEATURES



Biometric Reader prevents unauthorized access



Advanced Medco XT Intelligent Locking System



State-of-the-art Verapass® for evidence software

LOCKERS

AIRFLOW® WARDROBE LOCKER

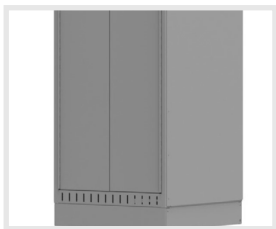
The Airflow® Wardrobe Locker features spacious stationary compartments and optimal air flow to facilitate the drying and odor venting of clothing and footwear.

Every Airflow Locker comes standard with a dedicated area for body armor along with hooks, shelves, and a lockable compartment to better organize and manage gear. While an optional base drawer allows for seating and storage space for bulky duty bags.

The original Airflow Locker was created with a singular mission—to design a locker specifically tailored to the needs of law enforcement personnel. Collaborating closely with officers, we developed a durable, purpose-built solution to support the demands of the profession. Today, we take pride in continuing this tradition of excellence.



AIRFLOW LOCKER BASE OPTIONS



4" Closed Base



Flush Base Drawer

Available in 15" and 18" heights



Extended Base Drawer

Available in 15" and 18" heights and 33" and 36" depths



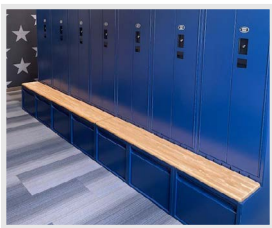
The Airflow® Wardrobe Locker features include:

- Specific design for law enforcement
- 12 standard storage and organizational components
- 14- and 16-gauge steel construction
- Independent base drawer option
- Unobstructed airflow throughout the locker opening
- Electrical options available upon request
- Standard sizes of 60", 66", and 72" heights



AIRFLOW LOCKER COMPONENTS

- Peg board with hooks
- Two large shelves
 - Briefcase shelf: 4.9"H x 13.9"D x full width
 - Headgear shelf: 7.8"H x 20.7"D x full width)
- Large hanging section designed with separations to keep clothing apart for better airflow
- Magnetic adjustable mirror
- Double hook and side panel hooks
- Lockable security compartment
- Document holder
- Lock options include combo, keyed, or hasp
- Boot tray includes a removable two-piece metal tray
- Base drawer unit (optional)
- 4" closed base (optional)
- Slope tops (optional)
- Drying rack (optional)
- Vent hood (optional)
- Electrical (optional)



Elevate your locker room with Steele Solutions. Contact us today to learn more about the Airflow® Wardrobe Locker and how it can be tailored to meet your unique needs.

LOCKERS

INFINITY WARDROBE LOCKERS

The Infinity Locker System has all the venting capabilities of the Airflow® Locker, but it is designed to allow complete in-the-field flexibility. It features a wide range of reconfigurable internal storage and organizational components that come fully assembled and function independently. The Infinity Locker System can be configured to meet multiple storage applications with the following features:



- Independent base drawer and electrical options
- Configuration modifications to meet multiple storage applications
- Wide range of reconfigurable internal storage and organizational components
- Lance pattern for greater range of adjustability
- Reconfigurable locker system
- 18-gauge welded construction
- Availability in a full range of sizes:
 - Heights: 60, 66, 72, 75, 78, 81, 84, 87, 90"
 - Widths: 18, 24, 30, 36, 42"
 - Depths: 24, 33, 36"

INFINITY LOCKER COMPONENT KITS

Value Kit: Full width shelf with integral hang bar and 3-hook rail.

Basic Kit: Full width shelf with integral hang bar, 3-hook rail, lock box, and removable boot tray.

Intermediate Kit: Full width shelf with integral hang bar, 3-hook rail, lock box, full width perforated shelf, document holder, and mirror.

Premium Kit: Full width shelf with integral hang bar, 3-hook rail, lock box, full width perforated shelf, document holder, mirror, removable boot tray, perforated drying rack, and power strip rail.

Premium Plus Kit: Full width shelf with integral hang bar, 3-hook rail, side panel hook, lock box, full width perforated shelf, mirror, removable boot tray, perforated drying rack, power strip rail, and security drawer.

SWAT Kit: Full width shelf with integral hang bar, full width perforated shelf, integral lock box and 3-hook rail, perforated drying rack, 3-hook rail, small shelf, and long gun mounting kit.



PERSONNEL LOCKERS

When public safety professionals need cost effective, heavy-duty wardrobe lockers, they turn to Steele Solutions' personnel lockers. Personnel lockers are available in 60", 66", and 72" heights with several key features, including:



- Six standard storage and organizational components configured on all units
- Lock options: combo, keyed, or hasp
- Solid or ventilated door options
- Bayonet latching system
- Independent base drawer option available
- Electrical options available

SIDEARM LOCKER SOLUTIONS

Sidearm lockers offer a rugged, durable solution for your secured firearms storage needs. These versatile and reliable lockers are ideal for use in public safety facilities, including police stations, sheriff's offices, courthouses, and federal buildings.



Key features include:

- Powder coat finish
- Felt-lined bottom
- Continuous hinges
- Digital lock options available
- 1-10 door units available
- Light gauge (14-gauge) and heavy gauge (16-gauge) options

LOCKERS

DUTY BAG AND TACTICAL EQUIPMENT

Built to meet the rigorous demands of our public safety professionals. Our duty bag lockers are the most durable storage solution for duty bags, go bags, and SWAT gear of all shapes and sizes.

What can you expect when you choose a Steele Solution Duty Bag and Tactical Equipment Locker?



- Multiple dimensions and configurations
- Heavy-duty construction using 14- and 16-gauge steel
- Robust keyed or hasp lock options
- Durable, load-bearing bottom drawer option
- Products that ship fully assembled
- Ideal solutions for your grab-and-go sally port or corridor space
- Indoor and outdoor use
- Stainless steel or powder coat finish options

VISITOR LOCKERS

Often found in law enforcement facilities, government buildings, museums, and aquatic centers, our visitor lockers are appropriate for storing personal items such as purses, wallets, bags, and cell phones. Key attributes include:



- Locking systems concealed behind the door, out of sight
- Durable 16-gauge doors and frames
- Available with 1-6 doors
- Multiples locking options
- Indoor and outdoor use
- Standard powder-coated finish
- Available in stainless steel
- Custom sizes available
- Standard widths – 12”, 15” and 18”
- Coin/token, keyed, hasp, combo, or digital lock
- ADA compliant door options
- Slope top

FIREARMS AND ARMORY RACKS

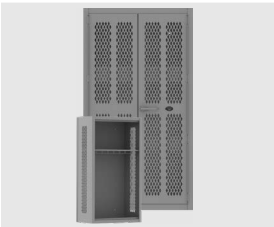
Firearms and armory racks can be customized to accommodate a wide variety of arms storage. Racks can be configured to secure M4, M9, M16A2, M870, AR series weapons, and more. Key attributes include:



- Interchangeable adjustable weapon mounts
- Pins for securing interior components
- Perforated doors and sides
- Retractable bi-fold doors
- Dependable door-locking mechanism
- Optional side handles for mobility
- Durable powder coat finish

TA-50 AND TACTICAL LOCKERS

Built to meet the rigorous demands of military professionals, this specialized military tactical locker is manufactured to accommodate bulky tactical gear and standard issue items.



TA-50 TACTICAL LOCKER

- Overall size: 42"W x 24"D x 78"H
- Shelf with hang bar standard in every locker
- Perforated doors and sides provide ventilation
- Dependable cast aluminum hasp handle
- 3-point locking mechanism
- Durable powder coat finish options
- Custom sizes available



OCIE TACTICAL LOCKER

- Heavy-duty 14-gauge welded construction
- Dependable cast aluminum hasp handle
- 3-point locking mechanism
- Single-Tier Unit overall size: 27"W x 36"D x 72"H
- Shelf with hang bar and right/left side panel hooks standard in Single-Tier lockers
- 2-Tier Unit Overall Size: 27"W x 36"D x 80"H
- Custom sizes available

SERVICES

EXPERT ENGINEERING SERVICES

At Steele Solutions, engineering is the foundation of our success. Our engineering and sales teams work hand-in-hand with integration teams to deliver well-coordinated, thoughtful solutions that prioritize the customer's operational efficiency and cost-effectiveness.

By sharing drawings and models from the initial concept to the final build, we ensure the optimization of design and fabrication schedules, meeting the tight deadlines of the e-commerce and material handling industry.

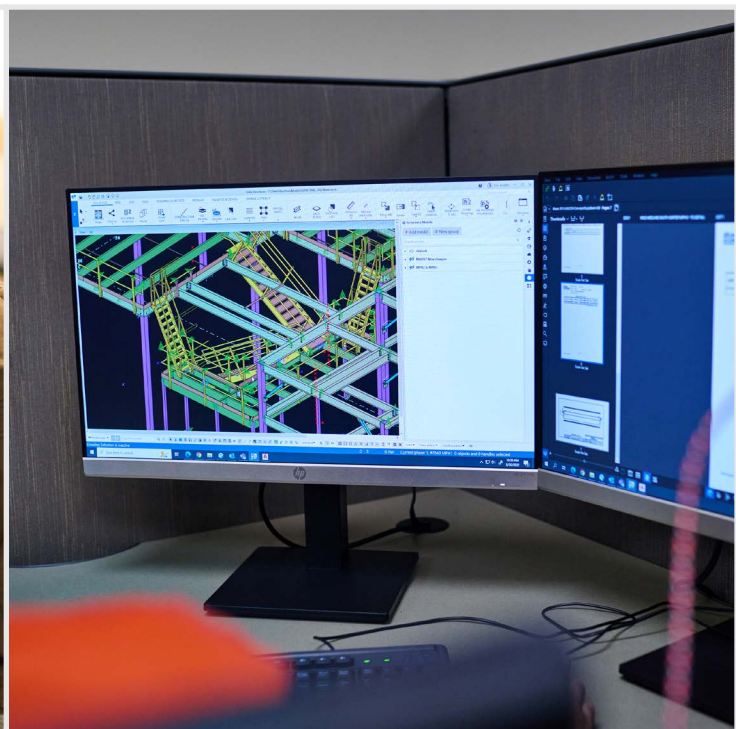
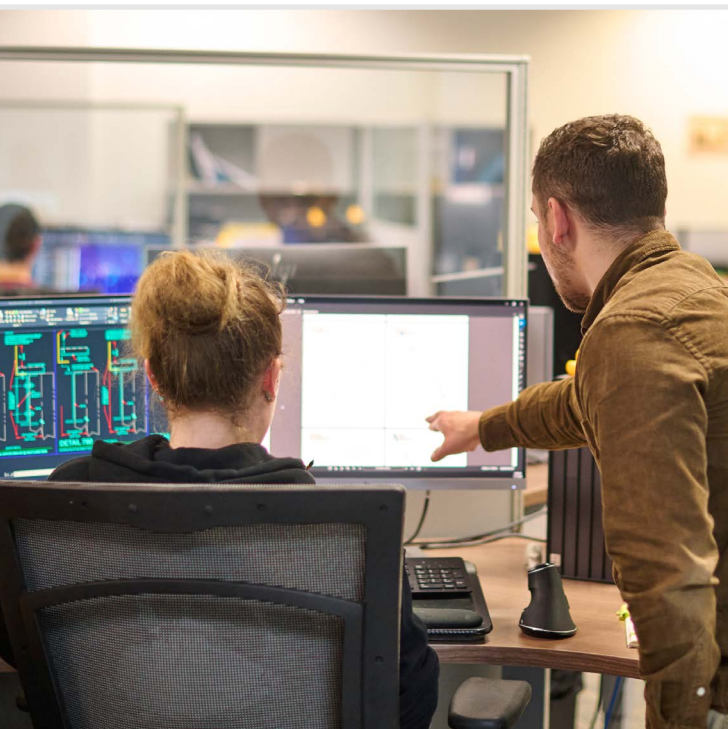
DESIGN SERVICES

Steele Solutions' engineering team has the skills and experience to provide design services and solutions for projects in all 50 states, Canada, and beyond.

With a team of 60+ engineers, we pride ourselves on product solutions with ingenuity and custom capabilities.

BUILDING INFORMATION MODELING (BIM)

Steele Solutions has revolutionized its design process by incorporating advanced 3D modeling tools. We utilize steel detailing software in project coordination and material planning, ensuring the visual model seen in the planning stages closely resembles the real-life structure.



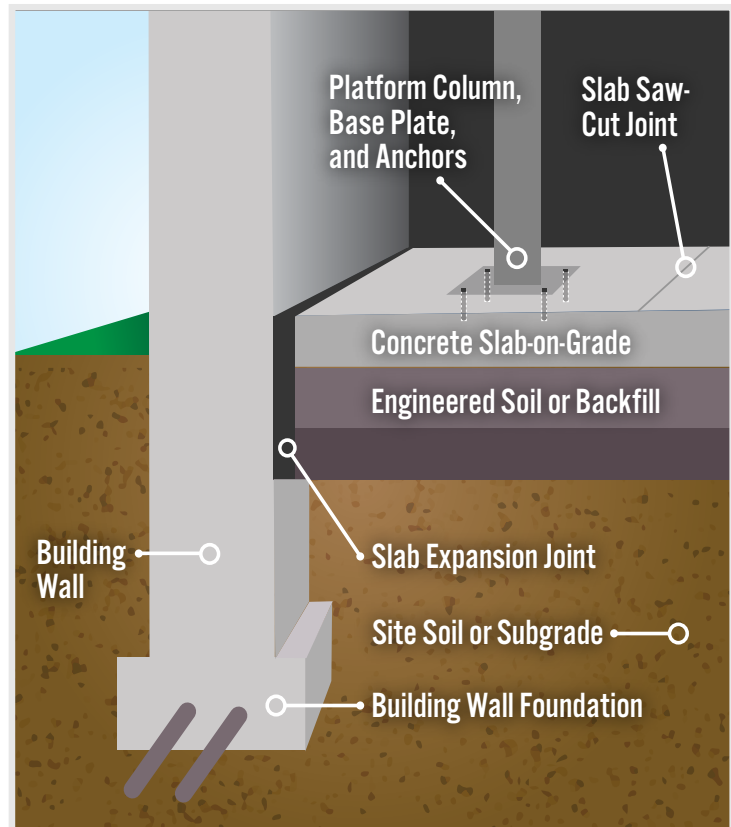
SLAB ANALYSIS

Concrete slab analysis services ensure your concrete slab can support high-concentration loads.

Whether evaluating new building concrete capacity requirements or recommending reinforcements and modifications for existing concrete floors, we ensure your concrete slab is equipped to safely and efficiently support your high-concentration loads.

Industry-leading engineers who specialize in concrete slab design and evaluation assess critical slab factors, including:

- Soil characteristics
- Column and base plate size
- Joint proximity
- Reinforcement requirements



BENEFITS OF STEELE SOLUTIONS' SLAB ANALYSIS

- **Expert Feedback You Can Trust.** We deliver clear results and next steps, so you always know where your project stands and how to proceed confidently.
- **Time and Cost Savings.** Accurate slab analysis helps avoid costly mistakes. By addressing potential issues upfront, we save you time, labor, and materials.
- **Customized Solutions.** Precise, project-specific designs rather than defaulting to overly conservative assumptions.
- **Streamlined Communication, Faster Timelines.** By consolidating design and slab evaluation under one umbrella, we eliminate the back-and-forth between multiple parties.

PROFESSIONAL ENGINEER VALIDATED AND STAMPED

Steele Solutions has a staff of professional engineers, and these engineers provide PE Stamped drawings for all 50 states and Canada. We can provide a professional engineer's stamp on any drawings or plans we prepare for platform solutions, validating the plan's safety and integrity and saving the time and cost of enlisting a third-party engineer unfamiliar with the project.

SERVICES

PROJECT MANAGEMENT SERVICES

Steele Solutions Project Managers are your single contact for updates during your platform or large-scale project. They ensure clear communication, keeping you engaged from engineering collaboration to final on-site installation.



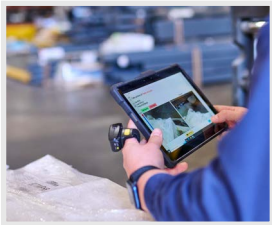
PROJECT KICK-OFF

- Coordinate and organize kick-off meeting to align everyone
- Understand project scope and forecast needs and questions
- Outline and agree on the structure installation sequence based on the customer's needs



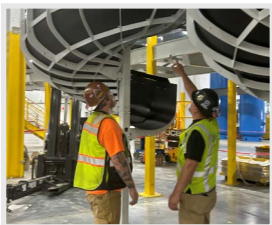
PRODUCTION

- Assist with scope changes and guide teams (internal and external) on the next steps
- Develop schedules to support delivery dates and ensure on-time delivery with team accountability
- Determine the best design approach to meet the customer's expectations on-site



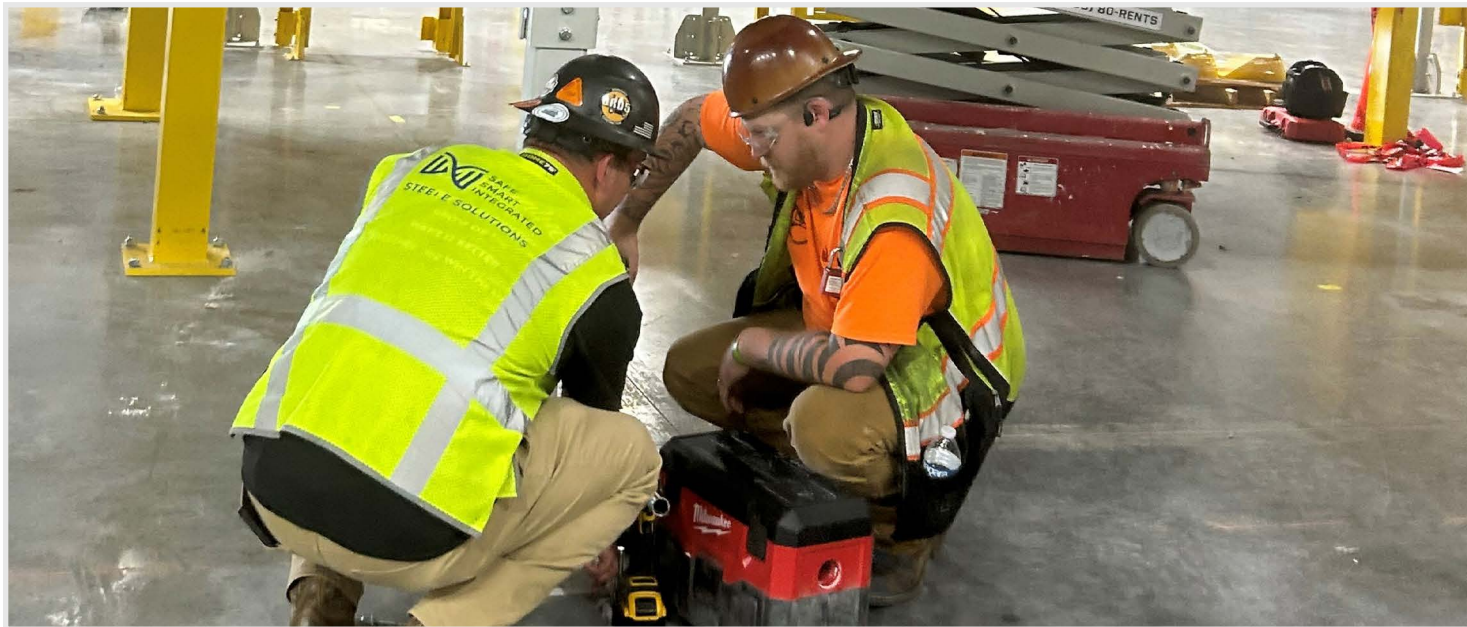
SHIPPING

- Work with shipping and fabrication to determine the sequence of trucks to the site
- Determine the best shipping method if materials are ahead of schedule
- Organize and accommodate proper order of delivery for customers



INSTALLATION

- Support installation teams with locating materials, clarifying drawings, and providing methods
- Utilize the project management response program to address issues and questions to prevent idle crew time



ON-SITE FIELD MANAGEMENT SERVICES

At Steele Solutions, the on-site project management team focuses on customer service for our product lines, taking away the headaches of receiving, installing, and fixing problems when they arise.



On-Site Daily: We're on-site as often as daily, guiding crews and ensuring proper material management.



Project Guidance: Our in-depth knowledge of Steele Solutions' design and manufacturing processes makes installation smoother and quicker.



Consistent Communication: We work with you to discuss on-site logistics and physical counts and resolve quality control issues in real time.



Shipping Coordination: We assist in managing the shipping schedule, ensuring clarity on when everything will be shipped, including the proper buildable chutes and platforms.



Sophisticated Project Management App: Our app provides real-time updates, copies of all receiving paperwork, and documentation of any areas of concern.



On-Site Training and Support: Hands-on training ensures installation crews have the knowledge and information necessary, which makes installation smoother and quicker.

CAPABILITIES

STATE-OF-THE-ART MANUFACTURING PROCESSES

Steele Solutions' state-of-the-art manufacturing processes enable us to deliver superior products to our customers. Our facilities have advanced machinery, technology, and equipment, allowing us to handle projects of any size and complexity with precision and efficiency.

OUR UNIQUE PHASED MANUFACTURING APPROACH

A phased manufacturing approach facilitates a smoother installation workflow by manufacturing project components in sequence to match when parts are required on-site.

STRATEGIC INSTALLATION TIMELINES

Steele Solutions' turnkey process matches critical elements of the manufacturing schedule with on-site installation priorities.

PERFECTLY TIMED DELIVERY

Efficient delivery processes ensure your project components arrive on time, in the correct order, and undamaged.

From strategic manufacturing processes to perfectly timed deliveries, we're committed to providing exceptional products and service with every project.





BEAM LINE SYSTEMS

- **State-of-the-Art Technology:** Featuring a three-spindle drill and a seven-axis robotic plasma system, this advanced solution delivers unmatched precision and efficiency in structural steel processing.
- **Streamlined Production:** A fully integrated system for cutting, drilling, milling and etching, designed to optimize steel component fabrication efficiency.
- **Versatile & Accurate:** Capable of handling a variety of steel profiles with exceptional precision.
- **High-Capacity Operations:** Engineered for high-volume production, maintaining precision even in large-scale projects.

ROBOTIC WELDERS

- **Uninterrupted Production:** Robotic welders with in-process setup minimize lead times and maximize throughput.
- **Optimized Efficiency:** Increases overall productivity, and output capabilities.
- **Certified Expertise:** Every weld is performed with oversight from AWS D1.1 certified welders, ensuring the highest quality results.

CAPABILITIES



POWDER COAT PAINT LINE

At Steele Solutions, we understand that appearance is just as important as performance. Our advanced powder coat paint lines are designed to provide a durable, aesthetically pleasing finish while maintaining optimal functionality.

- **High-Speed Efficiency:** Our paint line operates at an impressive 12 feet per minute, ensuring rapid throughput without compromising quality.
- **Advanced Automation:** Automated guided vehicles (AGVs) control carrier movement, offering multi-directional and variable-speed handling for optimal performance.
- **Consistent Application:** With 16 automated spray guns, we ensure even, precise coatings every time for a flawless finish.
- **Tailored Coating Solutions:** From protective powder coatings to vibrant paint finishes, we customize every solution to meet your product's unique needs.



BLASTING TECHNOLOGY

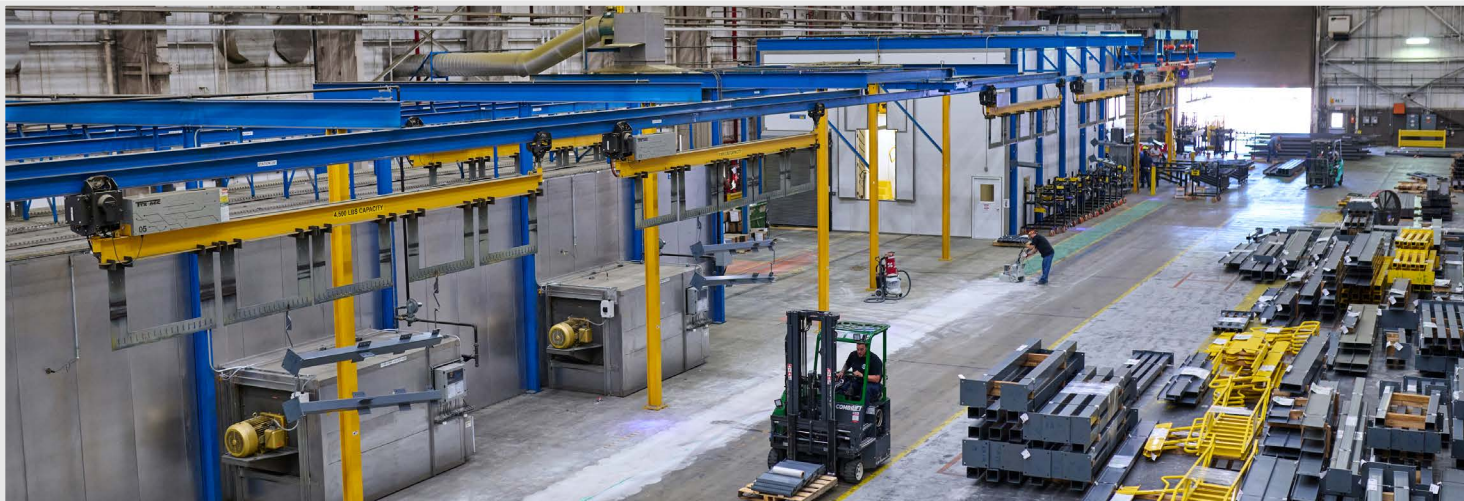
- **Superior Substrate Preparation:** Our blast cleaning process efficiently eliminates rust, mill scale, dirt, oil, and grease, ensuring the best surface preparation for coating adhesion and durability.
- **Integrated Efficiency:** Part of the same seamless process as our paint line, enabling a continuous, smooth production flow.
- **Permanent Bond:** Ensures coatings adhere permanently, providing lasting performance.
- **Enhanced Quality:** Delivers a smooth, uniform surface, leading to longer-lasting, high-quality finishes that are subject to ASTM quality checks.



FIBER LASERS

- **Exceptional Cutting Power:** Up to 20kW fiber power source delivers faster, more precise cuts, ensuring top tier results across a range of materials.
- **Large-Scale Capacity:** With a 240x100 table size and automated storage, this system maximizes productivity with complete automation.
- **Precision & Versatility:** Cuts a wide range of materials up to 1.50" thick with minimal edge deformation, achieving clean, high-quality results.
- **Efficiency at Its Core:** Optimized for speed and waste reduction, ensuring maximum output with minimal material loss.
- **Scalable Solutions:** Multiple laser systems available to meet the diverse demands of any project.

Our facilities hold CWB (Canada) certification, AISC certification, and approval from the City of Los Angeles, ensuring that all our products meet or exceed the highest industry standards for quality and performance.



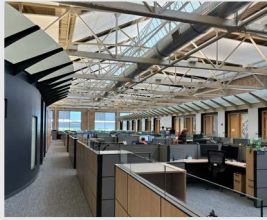
LOCATIONS, CONTACT INFORMATION



RAWSON FACILITY - HQ

1117 E Rawson Ave, South Milwaukee, Wisconsin 53172

Rawson serves as the central hub for platform manufacturing, housing our largest production facility and company headquarters.



SUMMIT PLACE

6737 West Washington Street, West Allis, Wisconsin 53214

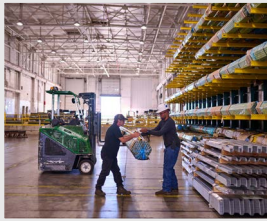
Our technical innovation center embodies Steele Solutions' vision of fostering collaboration and driving innovation.



WAUPACA FACILITY

1977 Royalton Street, Waupaca, Wisconsin 54981

This additional platform plant features duplicate equipment and a dedicated paint line, boosting our capacity while guaranteeing seamless business continuity.



STOCKING WAREHOUSE

1800 10th Avenue, South Milwaukee, Wisconsin 53172

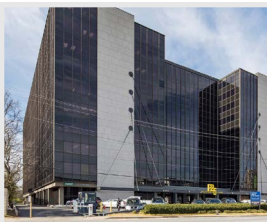
With over 100,000 square feet of parts and inventory, we can quickly ship components needed to keep projects on schedule and running smoothly.



TIFFIN FACILITY

450 Wall Street, Tiffin, Ohio 44883

Our primary location for chute and locker manufacturing is dedicated to producing high-quality solutions with precision and efficiency.

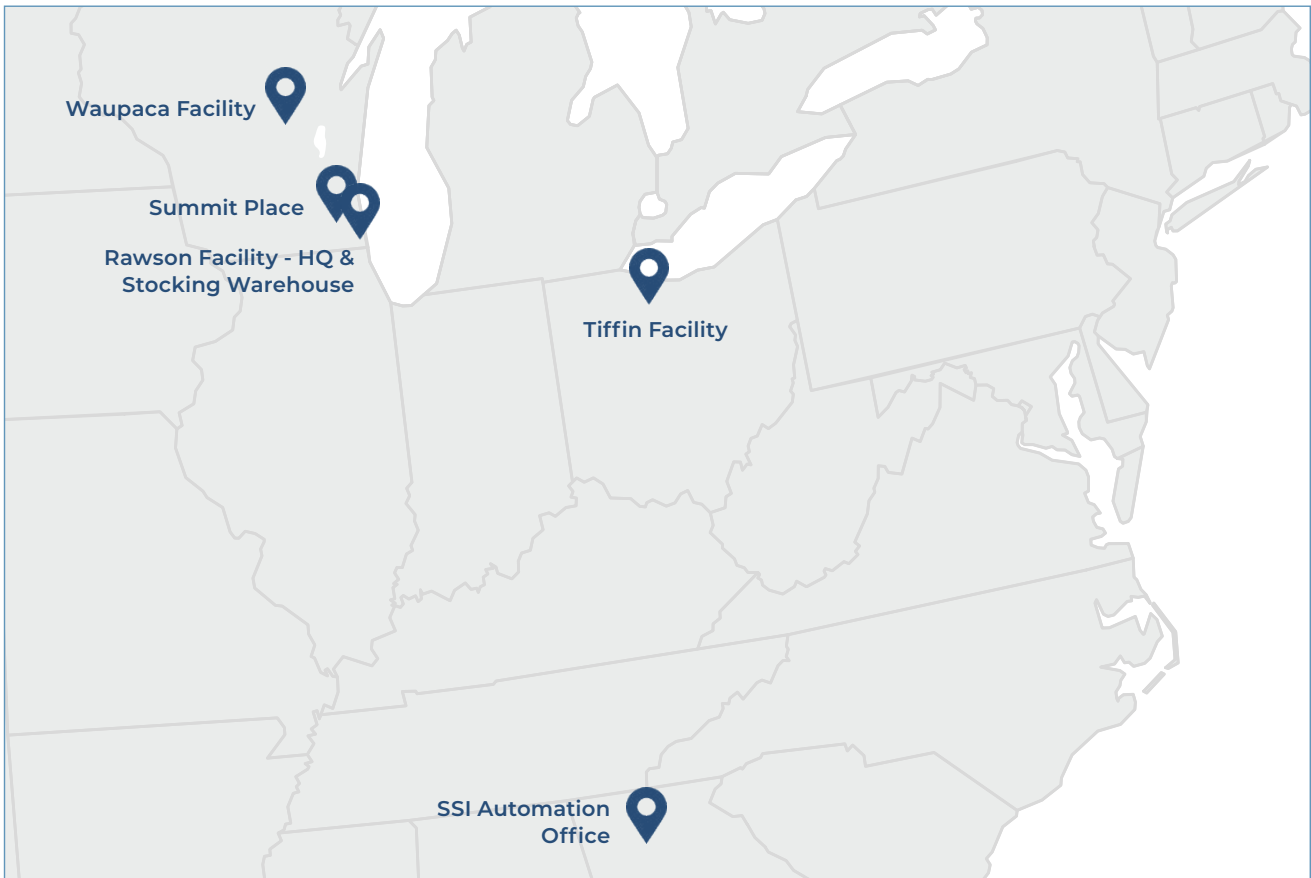


SSI AUTOMATION OFFICE

1720 Peachtree St. NE Suite 890 Atlanta, GA 30039

This hub focuses on design, implementation, and support of automated material handling systems.

GET IN TOUCH WITH STEELE SOLUTIONS



We have more than 550 employees who work in Wisconsin, Ohio, and Georgia. Steele Solutions utilizes six buildings for manufacturing, office and warehouse space totaling nearly 1,000,000 square feet.



Our commitment to quality goes beyond our products—it's embedded in the partnerships we build with our customers. Together, we create safe, smart, and integrated systems that stand the test of time.

- Kevin O'Neill, CEO



WHAT PROJECT CAN WE HELP YOU WITH?

1-800-537-0983 | info@steelesolutions.com | steelesolutions.com

Ready to experience the
Steele Solutions difference?



www.steelesolutions.com
info@steelesolutions.com